



U. of  
Oslo



U. of  
Copenhagen



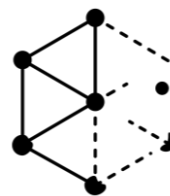
香港中文大學

Chinese U. of  
Hong Kong

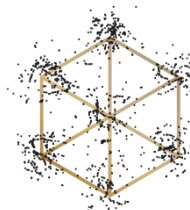


NTNU

Norwegian U. of  
Science and Technology



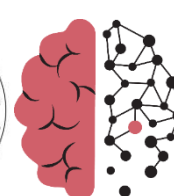
K.G. Jebsen Centre for  
Alzheimer's Disease



Kavli Institute for  
Systems Neuroscience



NO-Age



NO-AD



MIT-AD

# The NO-Age and NO-AD Seminar Series # 76

## Autophagic regulation of neurodegeneration

by

**Dr. Congcong He**

Feinberg School of Medicine at Northwestern University, U.S.A

14:00-15:00 (CET), Monday, 25<sup>th</sup> Nov. 2024

On-line:

[https://uio.zoom.us/webinar/register/WN\\_xFPT3tT\\_RI-x2ykEd1wjKg](https://uio.zoom.us/webinar/register/WN_xFPT3tT_RI-x2ykEd1wjKg)

Organizers:

Evandro F. Fang (UiO), Jon Storm-Mathisen (UiO), Asgeir Kobro-Flatmoen (NTNU), Lene Juel Rasmussen (KU),  
W.Y. Chan (CUHK)

Queries: [e.f.fang@medisin.uio.no](mailto:e.f.fang@medisin.uio.no)

Previous recorded talks are available here: <https://noad100.com/videos-previous-events/>



Name: Dr. Congcong He

Department of Cell and Developmental  
Biology, Feinberg School of Medicine,  
Northwestern University, U.S.A  
Email: [congcong.he@northwestern.edu](mailto:congcong.he@northwestern.edu)

**Speaker: Dr. Congcong He**

**Title: Autophagic regulation of neurodegeneration**

**Abstract:**

To be updated

**Biography:**

Dr. Congcong He is an associate professor in the Department of Cell and Developmental Biology of Feinberg School of Medicine at Northwestern University in Chicago. Her lab studies how autophagy, a stress-induced lysosomal degradation pathway, regulates metabolism and behaviors in mouse models, and how to modulate autophagy to treat complex metabolic and neurological disorders such as type 2 diabetes and neurodegeneration. She received her PhD at the University of Michigan in 2009 on yeast autophagy with Dr. Daniel Klionsky, and completed postdoctoral training on mammalian autophagy with the late Dr. Beth Levine at the University of Texas Southwestern Medical Center. She started her independent lab at Northwestern University in 2013. Research of her lab has been published on scientific journals including Science Advances, Cell Metabolism, Cell Reports, Nature and Autophagy, and she has received many awards such as the AFAR New Investigator Award in Alzheimer's Disease, the BrightFocus Foundation Alzheimer's Disease Research Award and the EMBO Journal Speaker Award. She has been an editorial board member and editor for the journal Autophagy, and a frequent reviewer for many high-profile journals and national/international funding agencies, including six NIH study sections, US Department of Defense, European Research Council, UK Medical Research Council (MRC), and multiple private foundations. She is a founding member of the Women In Autophagy (WIA) network, and the inaugural Co-organizer and Chair of the 1st WIA annual symposium in 2020.